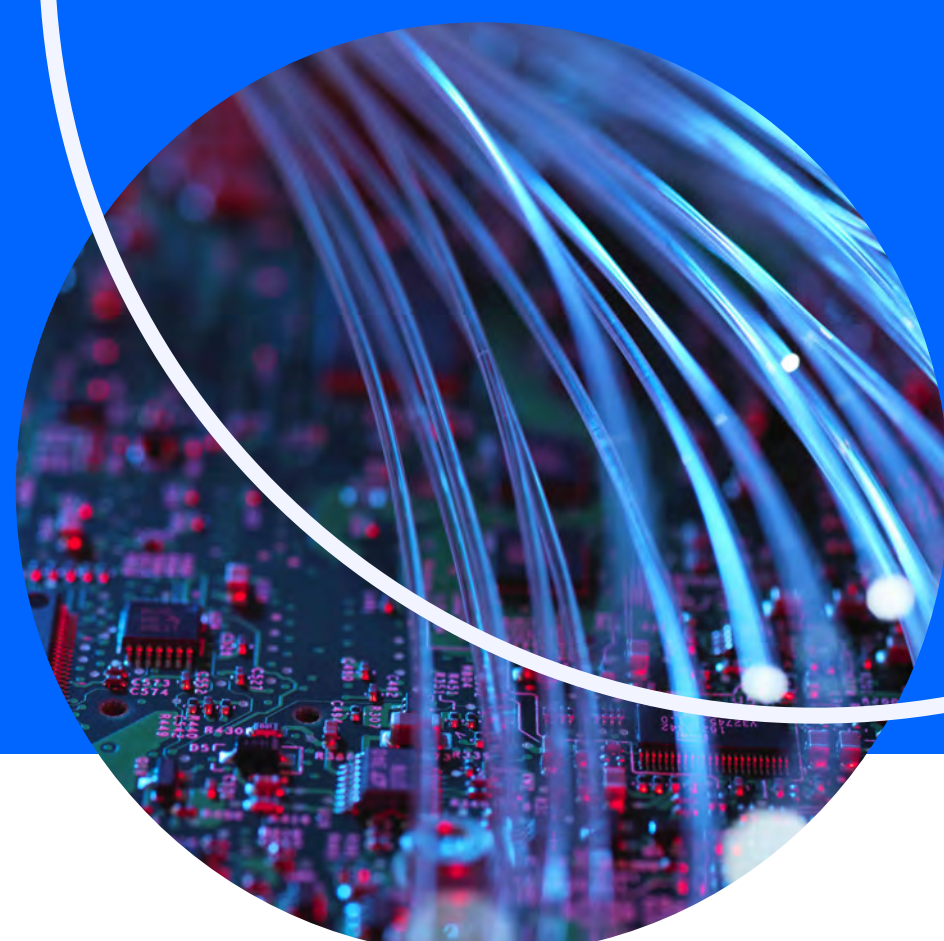


SD-WAN Trends 2022 and Beyond

2022

SD-WAN today

"SD-WAN has taken the networking industry by storm. With increased flexibility and agility, there is anticipated annual growth in SD-WAN deployments of around 18% annually through 2024." ⁽¹⁾



The Landscape

SD-WAN

provides end-to-end data encryption enabling a secure, global connection between sites.

By 2024, to increase agility and enhance support for cloud applications,

60% of enterprises

will have implemented SD-WAN, up from less than 20% today. ⁽³⁾

"With more clarity on the direction of macroeconomic conditions and the pandemic in 2021, businesses will increasingly execute on their strategic **SD-WAN investments**, which in turn will drive a **market acceleration**."

Shin Umeda, Vice President at Dell'Oro Group. ⁽²⁾

Enterprise cumulative spend on SD-WAN technology from 2020 through 2024 amounts to

\$25.6 billion ⁽³⁾

The rise of SASE



Secure Access Service Edge (SASE) – defined by Gartner – enables **secure and fast network connectivity** to meet the business challenges of digital transformation, workforce mobility and edge computing.

In 2022, SASE means office connectivity AND remote access.

Users are working from home, but if your company is like most, it will gradually also shift back to the office. This means that SASE offerings can't ignore one or the other. They must **equally support offices and remote users**. ⁽⁴⁾

30% of new WAN installations will go SASE. ⁽⁴⁾

With offices sitting empty and companies investing in home users, infrastructure investments need to accommodate both domains. Legacy MPLS networks are sitting under-utilized and costing a bundle.

All of which will push more and more organisations to re-evaluate their priorities and invest in network architectures that equally accommodate offices and mobile users accessing applications in data centers and the cloud. ⁽⁴⁾

Hybrid IT



drives adoption of WAN internet and local internet breakouts to connect to SaaS applications and overlay SD-WAN gear for **agile, flexible and cost-efficient** bandwidth. ⁽³⁾

More Agile Cloud Connectivity



The SD-WAN overlay is also evolving and expanding to make it **easier and faster** to establish connectivity to a range of cloud services. ⁽¹⁾

We unlock the power of **integrated technology**, bringing together a unique combination of the **best people**, with the **best tech** and the **best platforms**, supported by a dynamic partner ecosystem, to make a real difference to **our customers, every day**.

We're here to **help**.

Visit **telefonicatech.com** for more information on Cloud Technology.

